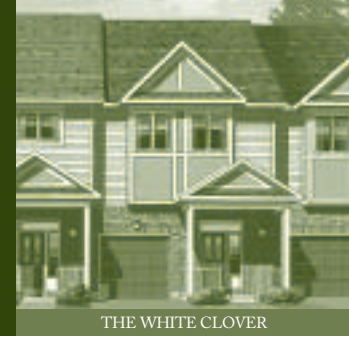


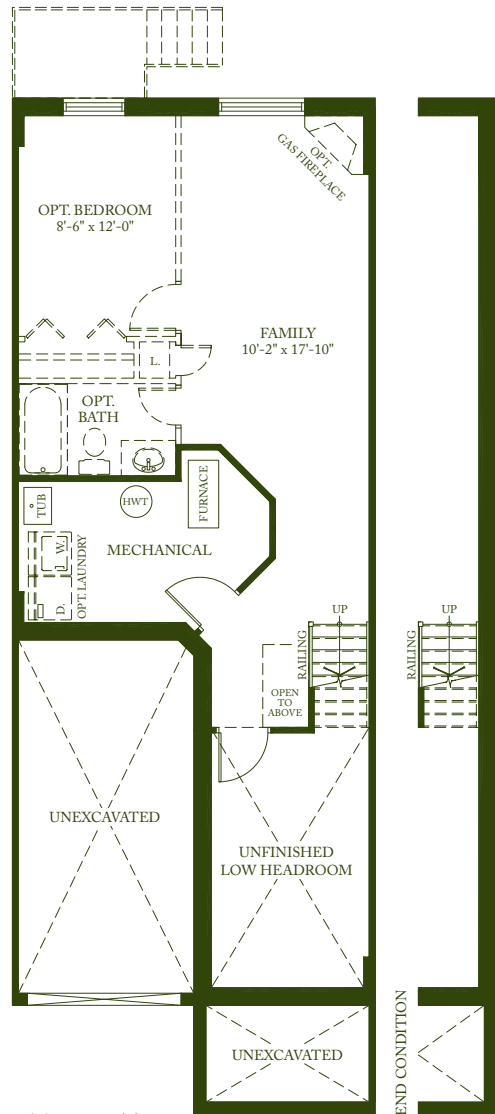
THE WHITE CLOVER ^(A1)

Trifolium repens — White clover is a creeping perennial plant. The leaf consists of three leaflets that are 1/4 to 1/2 inch (0.6 - 1.2 cm) long. Each leaflet may have a whitish circular band within the center. The flowers form a ball-shaped cluster.

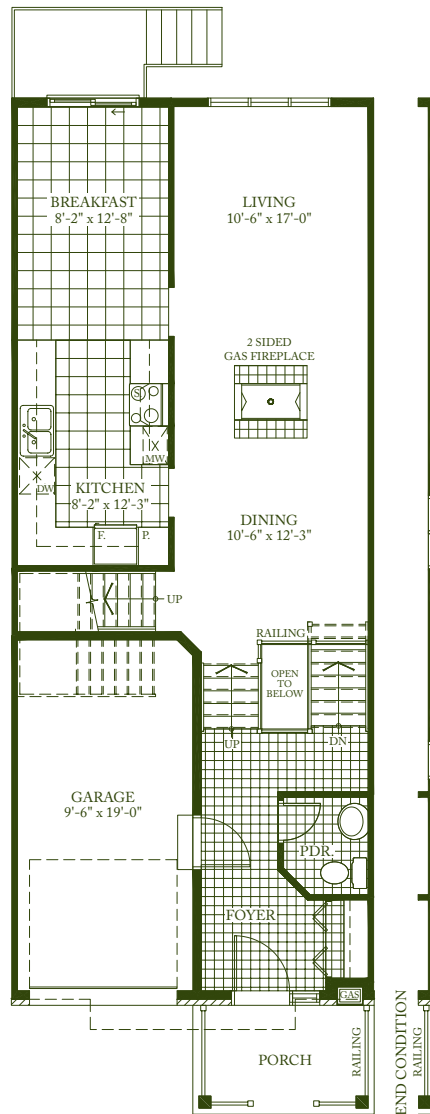
2250 SQ. FT.



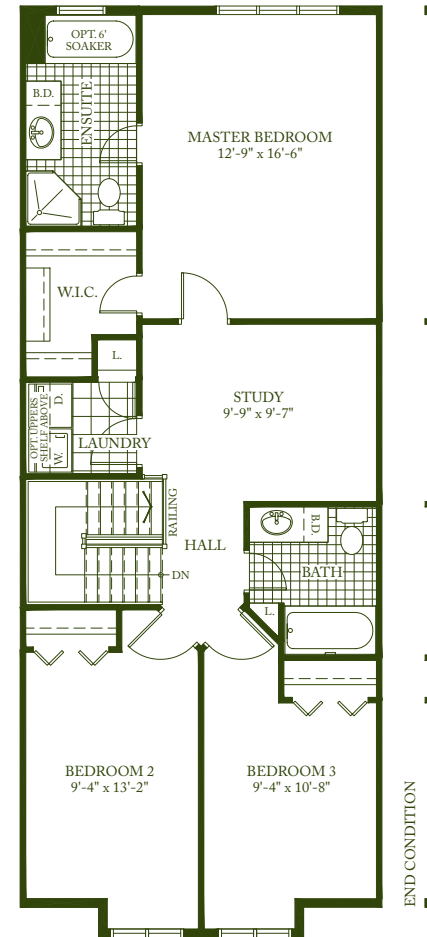
THE WHITE CLOVER



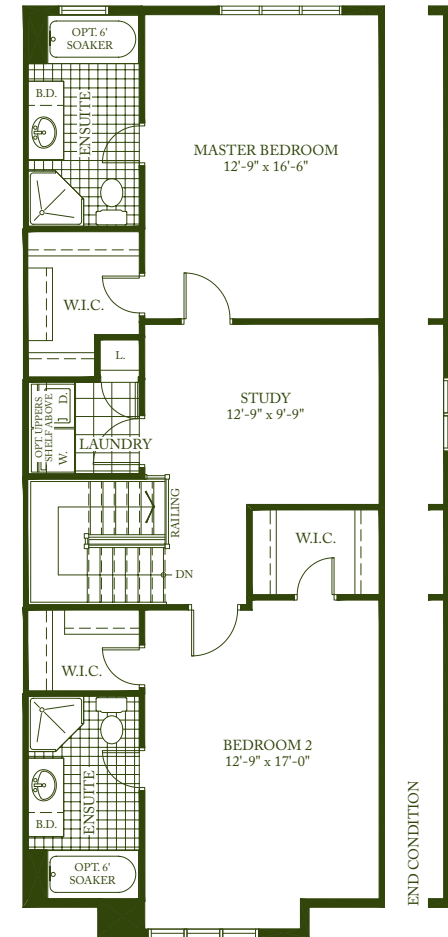
BASEMENT
AREA ELEV. A & B = 490 sq. ft.



GROUND FLOOR
AREA = 775 sq. ft.
TOTAL AREA = 2250 sq. ft.



SECOND FLOOR
AREA ELEV. A = 985 sq. ft.



ALTERNATE SECOND FLOOR
AREA ELEV. B = 985 sq. ft.

Exterior elevations are artistic concepts only—window size, location, and window grills may vary from plan. Actual usable floor space may vary from stated floor area. Kitchen layouts, furnace, HWT and laundry tub locations could vary from plan. Vertical and horizontal boxes, drop ceilings & false walls are not shown on plan and may be required at the discretion of Diamond Developments Ltd. Laundry room, powder room and/or foyers may be dropped subject to grading. **March 29, 2006**