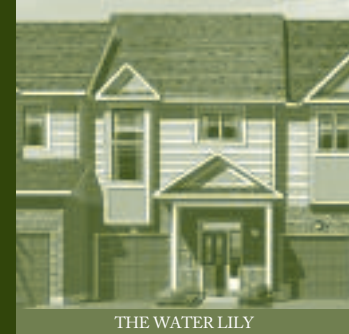




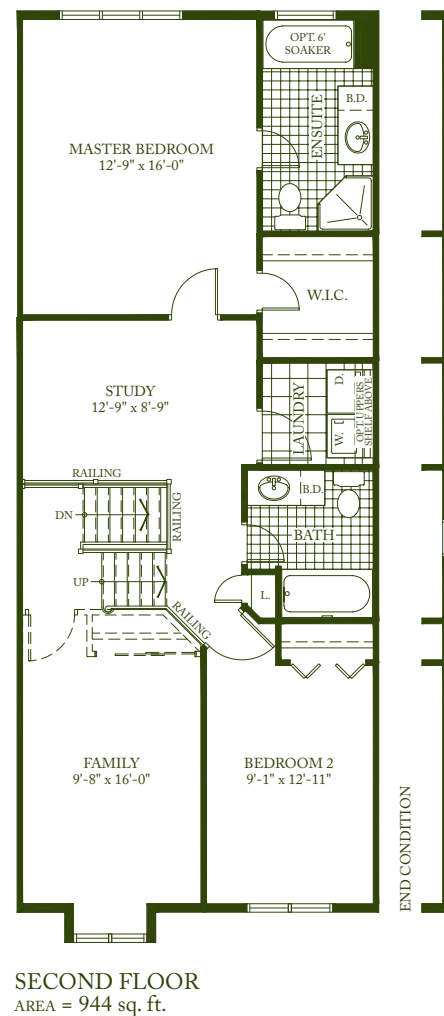
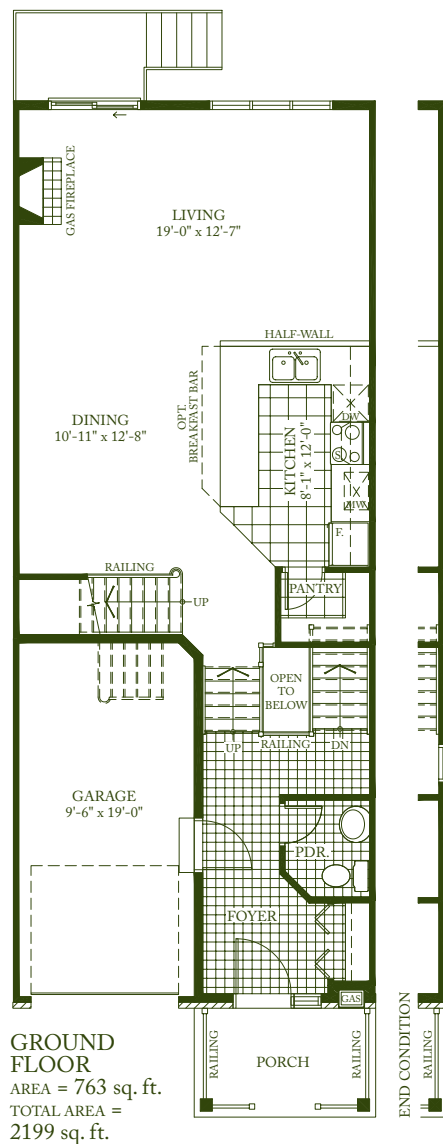
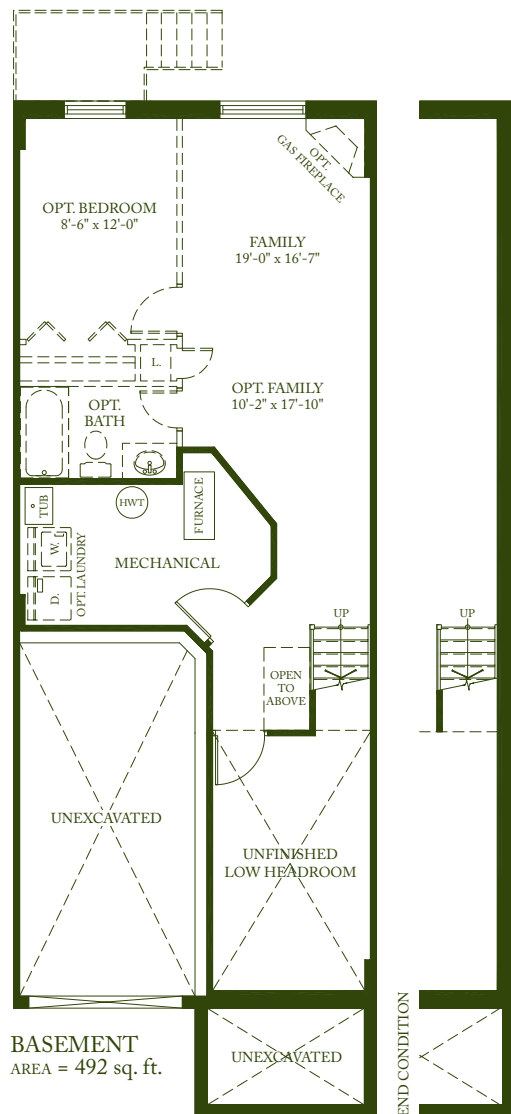
THE WATER LILY (A2)

Nymphaeales — There are 70 different species of water lilies. The water lily has long, stout leaves and long flower stalks. There are usually six petals and six stamen. Water lilies are also able to reproduce by budding. The roots detach and grow into new water lilies.

2199 SQ. FT.



THE WATER LILY



Exterior elevations are artistic concepts only—window size, location, and window grills may vary from plan. Actual usable floor space may vary from stated floor area. Kitchen layouts, furnace, HWT and laundry tub locations could vary from plan. Vertical and horizontal boxes, drop ceilings & false walls are not shown on plan and may be required at the discretion of Diamond Developments Ltd. Laundry room, powder room and/or foyers may be dropped subject to grading. **March 29, 2006**