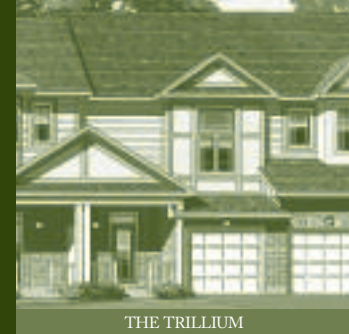




THE TRILLIUM ^(B2)

Trillium grandiflorum — Erect woodland plant, with three ovate leaves noticeably veined, and a single flower hanging below the leaves. Flower petals and sepals are rolled upward. Petals are white, and sepals green in colour. Flower size is approximately 3 cm in diameter.

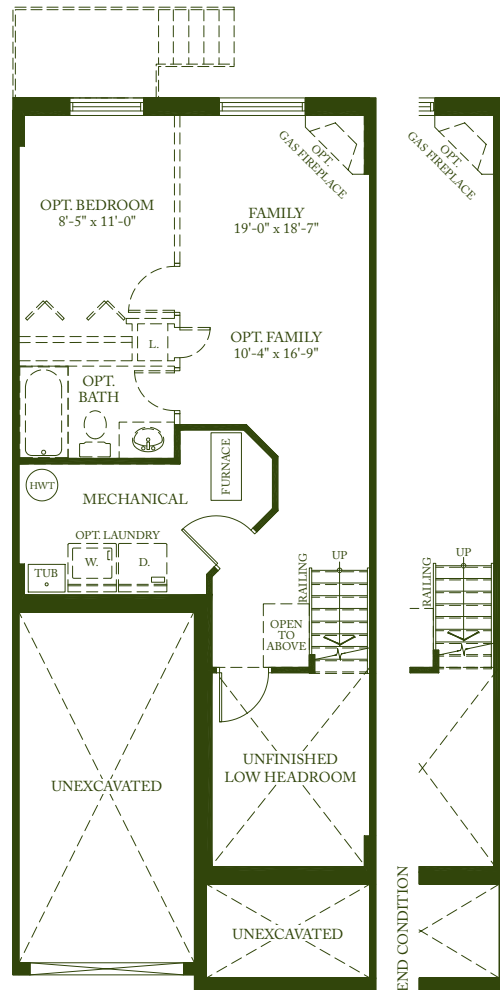
1995 SQ. FT.



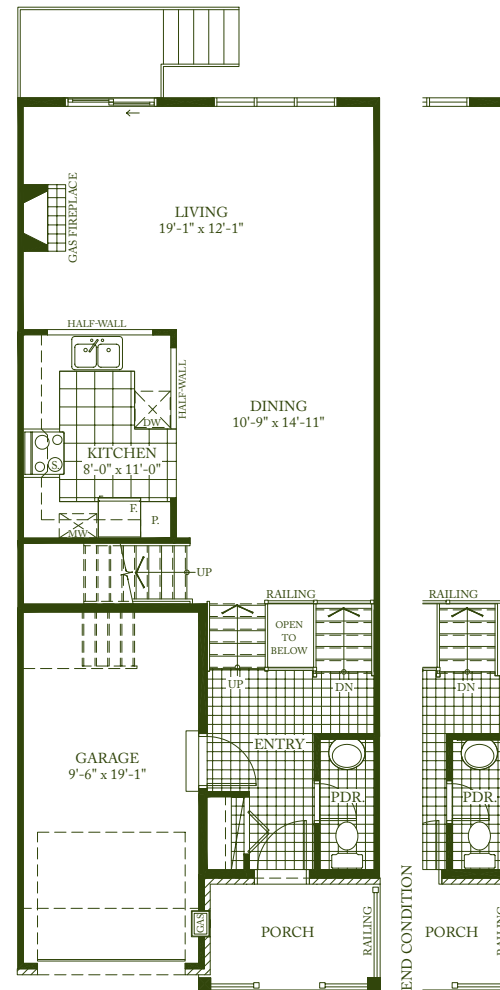
THE TRILLIUM



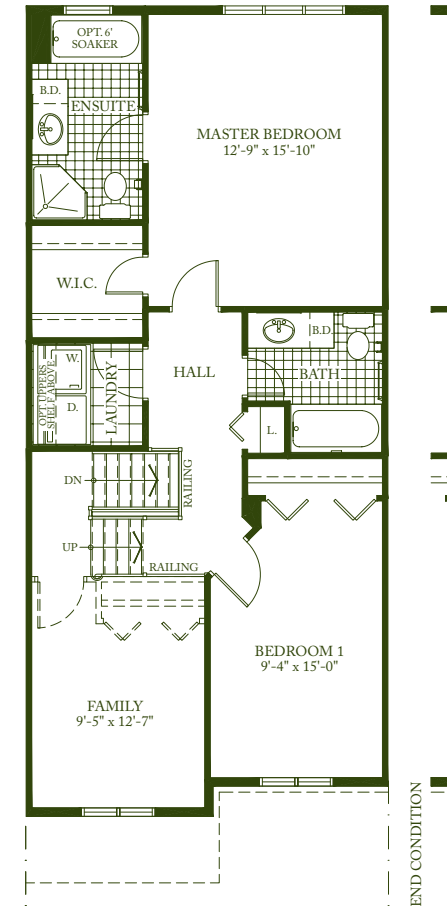
SANDPIPER COVE



BASEMENT
AREA = 450 sq. ft.



GROUND FLOOR
AREA = 695 sq. ft.
TOTAL AREA = 1960 sq. ft.



SECOND FLOOR
AREA = 850 sq. ft.

Exterior elevations are artistic concepts only—window size, location, and window grills may vary from plan. Actual usable floor space may vary from stated floor area. Kitchen layouts, furnace, HWT and laundry tub locations could vary from plan. Vertical and horizontal boxes, drop ceilings & false walls are not shown on plan and may be required at the discretion of Diamond Developments Ltd. Laundry room, powder room and/or foyers may be dropped subject to grading. **March 29, 2006**