

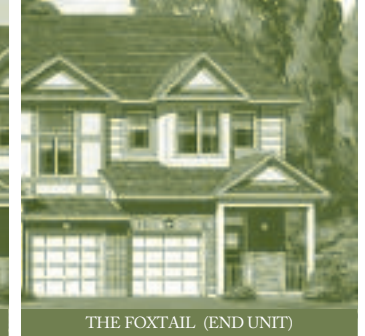
# THE FOXTAIL (B1A)

2030 SQ. FT.

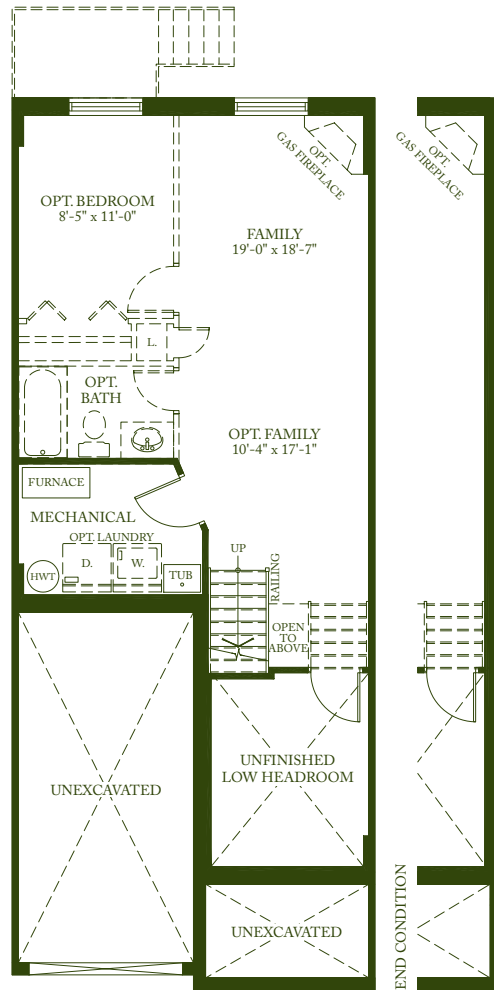
*Setaria glauca* — This weedy grass is readily recognized by the narrow, cylindrical head containing long hairs. Its grains are small, less than 6 millimeters long. The dense heads of grain often droop when ripe. The flowers are cylindrical, dense, bristly, and erect. They are 2 to 5 inches long, yellow, spike-like, and appear June to September.



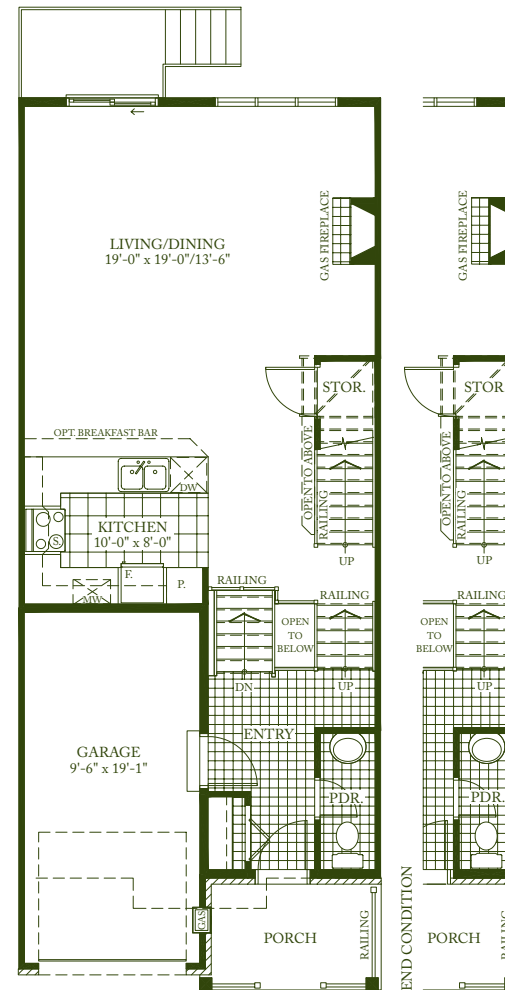
THE FOXTAIL



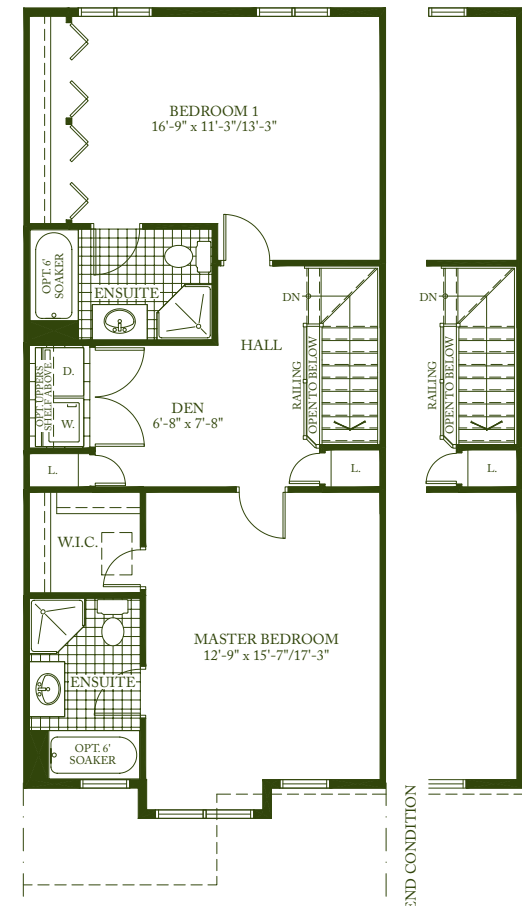
THE FOXTAIL (END UNIT)



**BASEMENT**  
 AREA = 480 sq. ft.  
**OPTIONAL BASEMENT**  
 AREA = 480 sq. ft.



**GROUND FLOOR**  
 AREA = 687 sq. ft.  
 TOTAL AREA = 1932 sq. ft.



**SECOND FLOOR**  
 AREA = 834 sq. ft.

Exterior elevations are artistic concepts only—window size, location, and window grills may vary from plan. Actual usable floor space may vary from stated floor area. Kitchen layouts, furnace, HWT and laundry tub locations could vary from plan. Vertical and horizontal boxes, drop ceilings & false walls are not shown on plan and may be required at the discretion of Diamond Developments Ltd. Laundry room, powder room and/or foyers may be dropped subject to grading. **March 29, 2006**