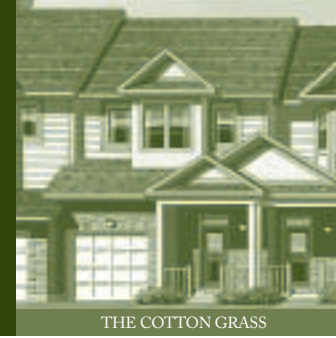
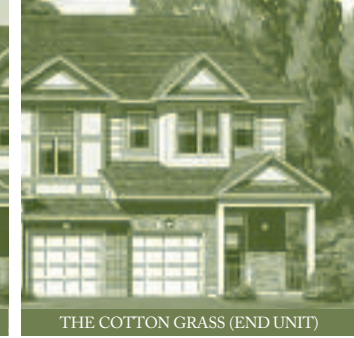


# THE COTTON GRASS<sup>(B1)</sup> 1976 SQ. FT.

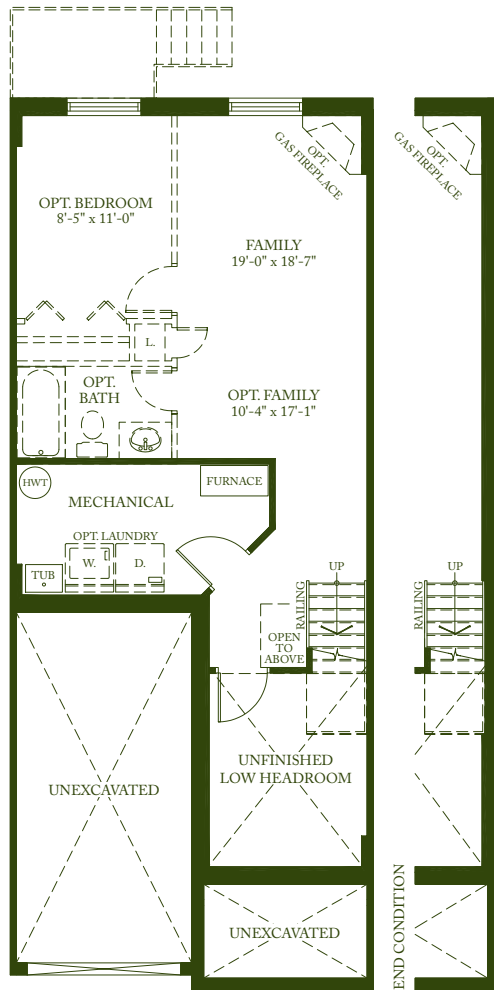
*Eriophorum chamissonis* — The leaves are up to 6 mm wide and are V-shaped in cross-section. The stem is a rather rounded, triangular shape in cross-section. The stems of the flower spikes have minute forward-pointing bristles which can be felt by rubbing your fingers along the flower stem.



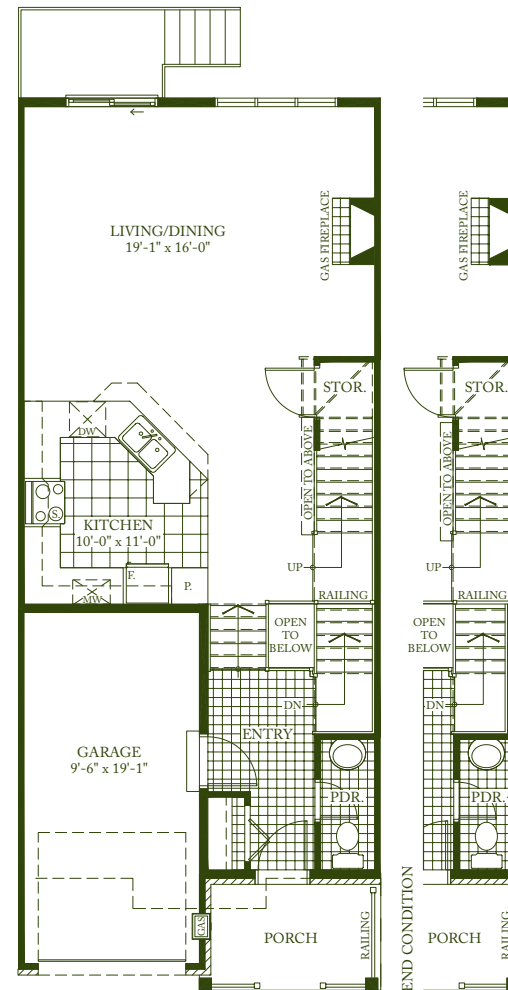
THE COTTON GRASS



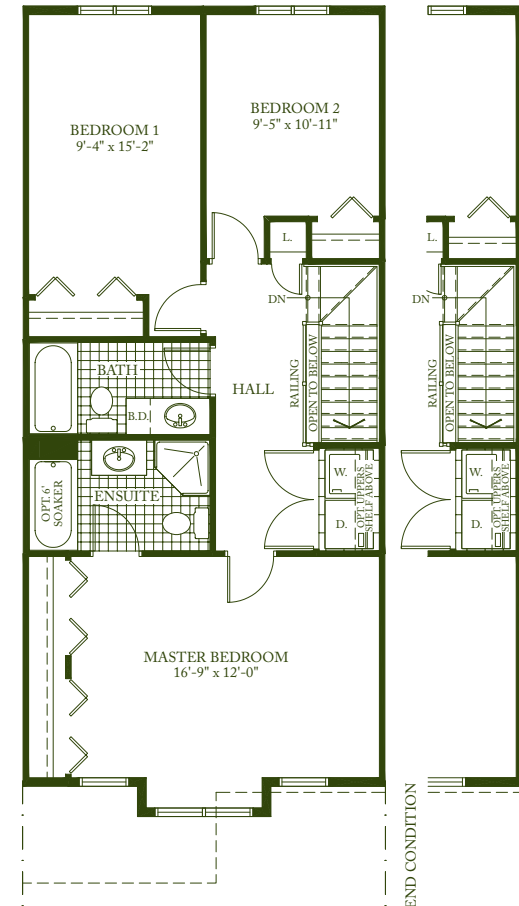
THE COTTON GRASS (END UNIT)



**BASEMENT**  
 AREA = 458 sq. ft.  
**ALTERNATE BASEMENT**  
 AREA = 458 sq. ft.



**GROUND FLOOR**  
 AREA = 685 sq. ft.  
 TOTAL AREA = 1930 sq. ft.



**SECOND FLOOR**  
 AREA ELEV. A = 833 sq. ft.

Exterior elevations are artistic concepts only—window size, location, and window grills may vary from plan. Actual usable floor space may vary from stated floor area. Kitchen layouts, furnace, HWT and laundry tub locations could vary from plan. Vertical and horizontal boxes, drop ceilings & false walls are not shown on plan and may be required at the discretion of Diamond Developments Ltd. Laundry room, powder room and/or foyers may be dropped subject to grading. **March 29, 2006**