

# THE BELLFLOWER<sup>(C1)</sup>

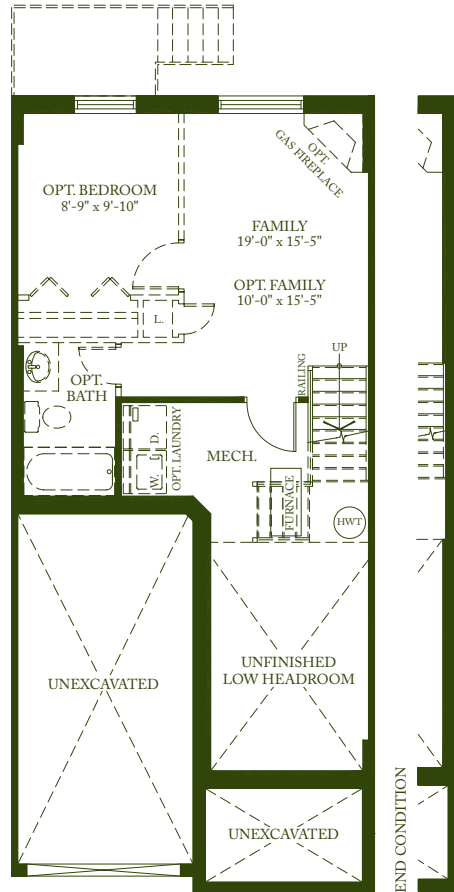
1691 SQ. FT.

*Campanula* — This species include annual, biennial and perennial plants. The leaves often vary in shape on a single plant, with larger, broader leaves at the base of the stem and smaller, narrower leaves higher up. The flowers are produced in panicles, and have a bell-shaped, five-lobed corolla 2-5 cm long, mostly blue to purple.

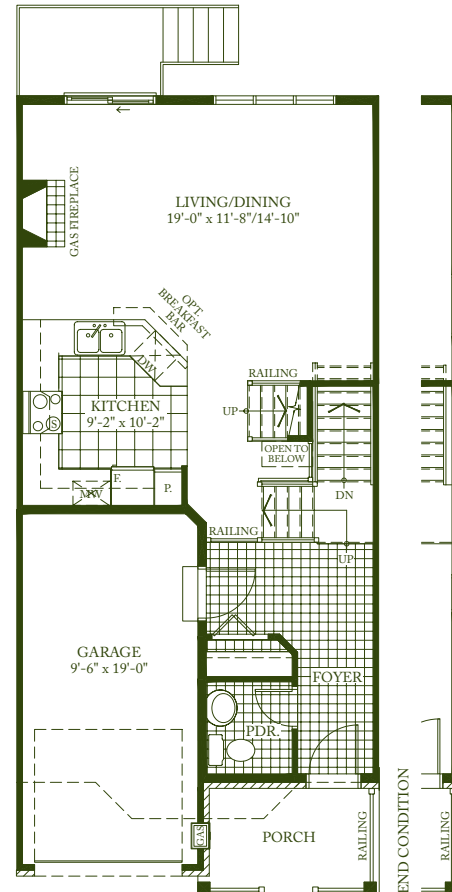


THE BELLFLOWER

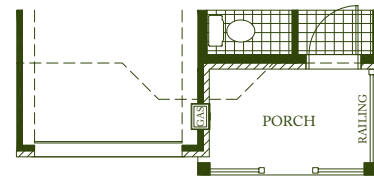
THE BELLFLOWER (ALTERNATE)



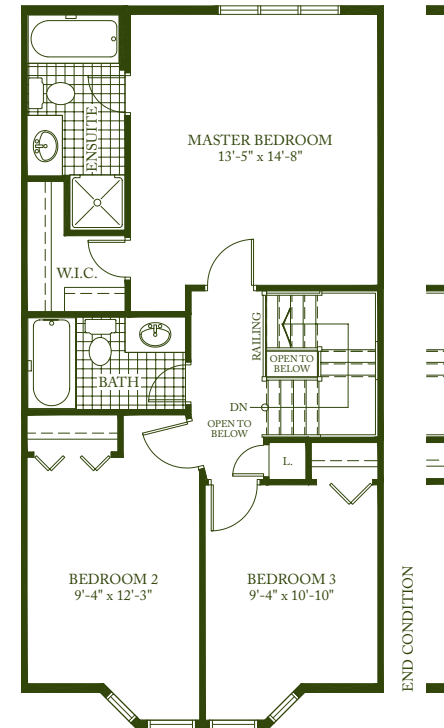
**BASEMENT**  
AREA = 358 sq. ft.  
**OPTIONAL BASEMENT**  
AREA = 358 sq. ft.



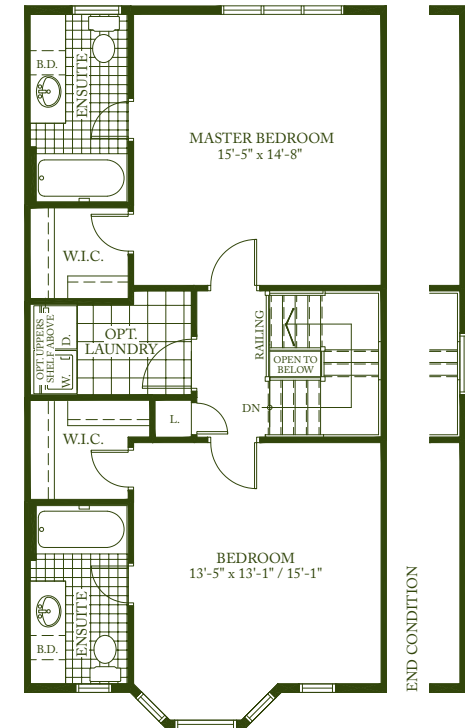
**GROUND FLOOR**  
AREA = 588 sq. ft.  
TOTAL AREA = 1691 sq. ft.



**GROUND FLOOR**  
(WITH SMALLER BAY PROJECTION  
FOR ALT. 2nd FLOOR)



**SECOND FLOOR**  
AREA = 745 sq. ft.



**ALTERNATE SECOND FLOOR**  
AREA = 743 sq. ft.

Exterior elevations are artistic concepts only—window size, location, and window grills may vary from plan. Actual usable floor space may vary from stated floor area. Kitchen layouts, furnace, HWT and laundry tub locations could vary from plan. Vertical and horizontal boxes, drop ceilings & false walls are not shown on plan and may be required at the discretion of Diamond Developments Ltd. Laundry room, powder room and/or foyers may be dropped subject to grading. **March 29, 2006**